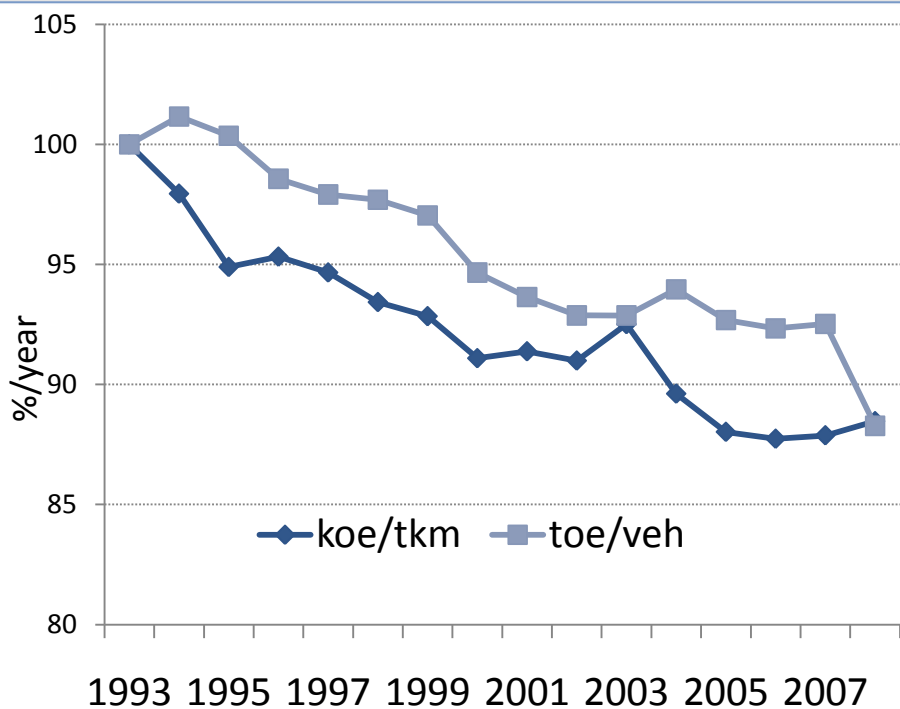


- Reduction of the average energy consumption per tonne-km at about 0.8%/yr over 1993-2008; slower trend since 2000 due to a decrease in the load factor (tkm/veh) ; between 1993 and 2000 on the opposite faster decrease because of a better management (increase in ton-km/veh)

Trends in unit consumption of road transport of goods (EU)



Variation of unit consumption of road transport of goods (EU)

