



# ***“Monitoring of EU and National Energy Efficiency Targets” (ODYSSEE-MURE 2010)***

## **Kick-Off Meeting**

### ***Updating the situation of Spanish Biofuels Sector***

**Madrid, 21-22 June 2010**

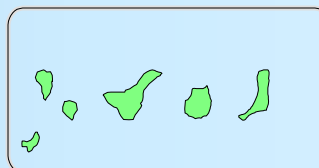
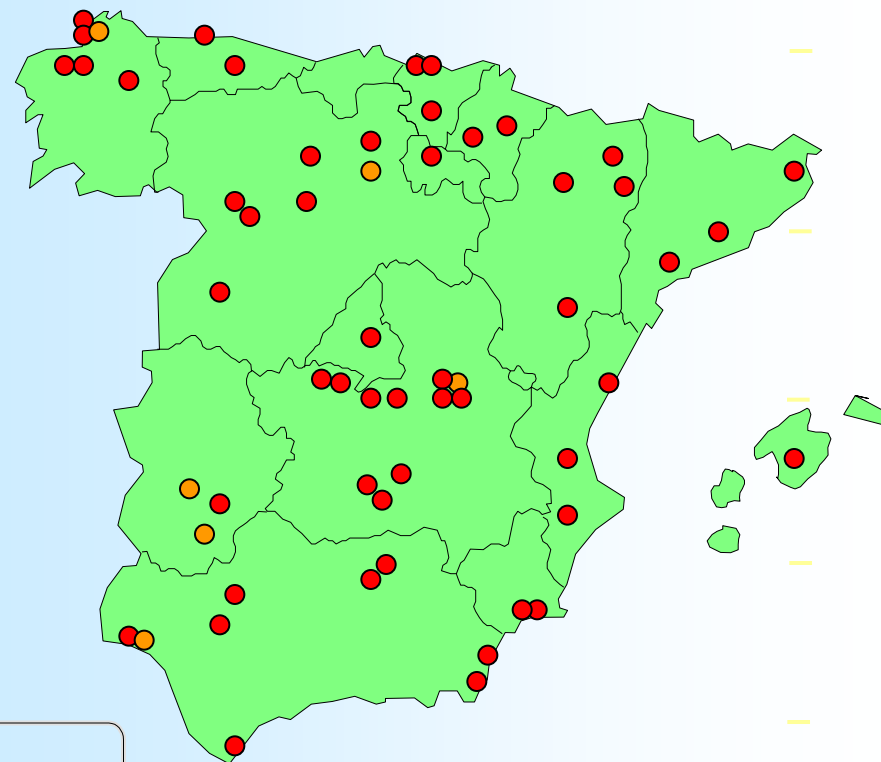
***Carlos Alberto FERNÁNDEZ LÓPEZ***  
***Head of Biofuels Department***  
***IDAE***



# Production capacity

Operation: 4.06 Mtoe/y  
Construction: 0.50 Mtoe/y

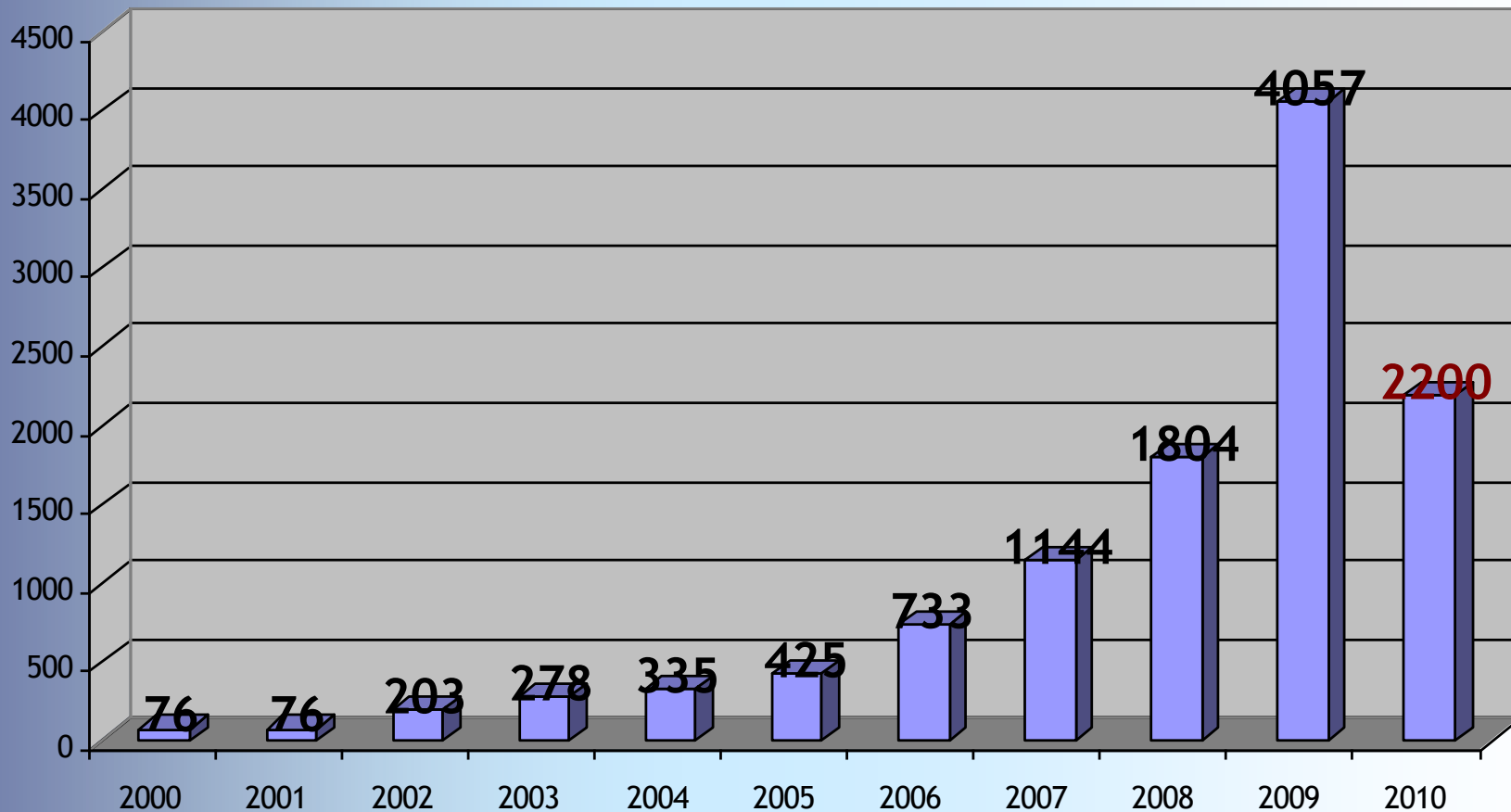
- Reliable legal framework: tax incentive & obligation.
- Market highlights:
  - ✓ 52 plants already commissioned.
  - ✓ BD: overcapacity & unfair import regimes.



Operation  
 Construction



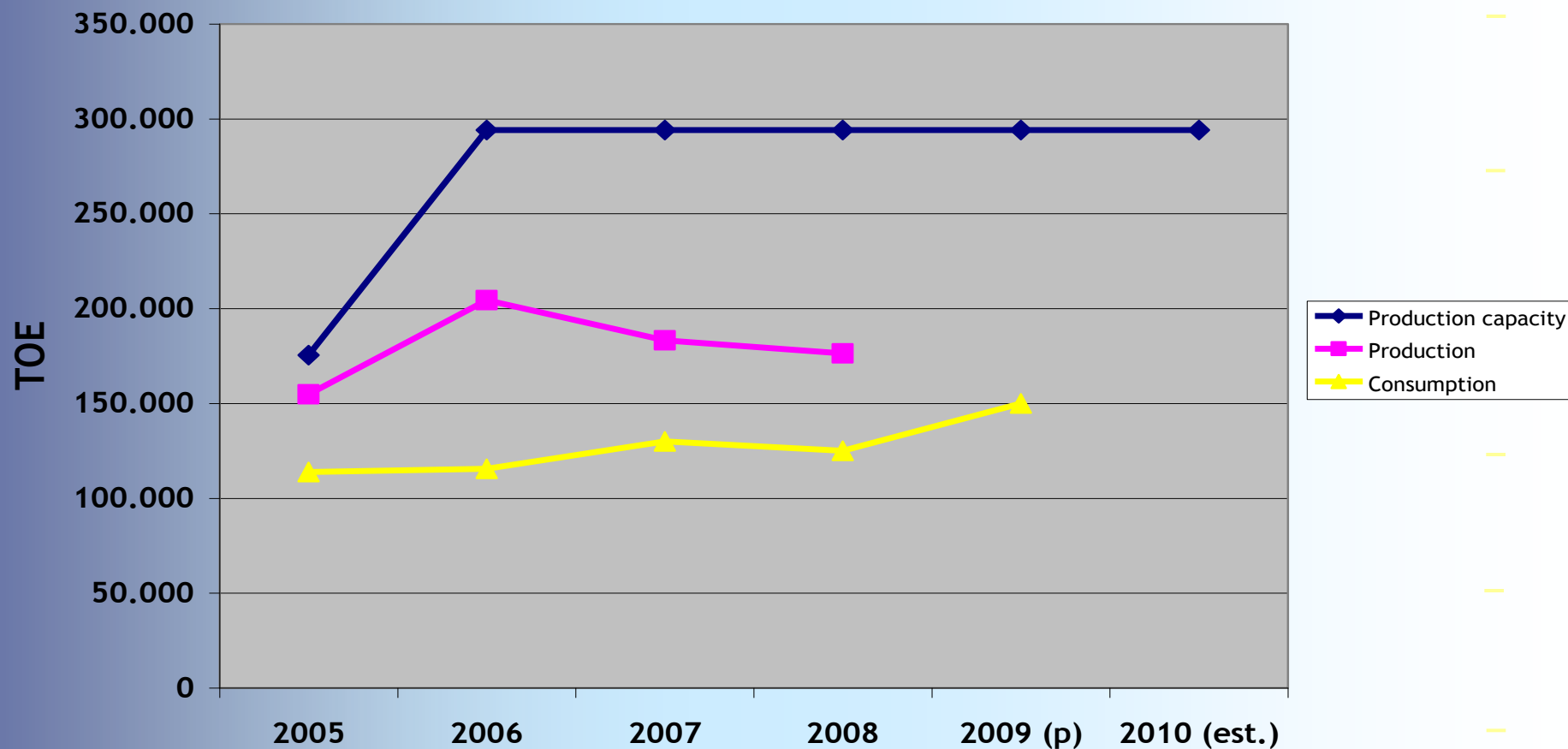
## Biofuels: production capacity (ktoe)





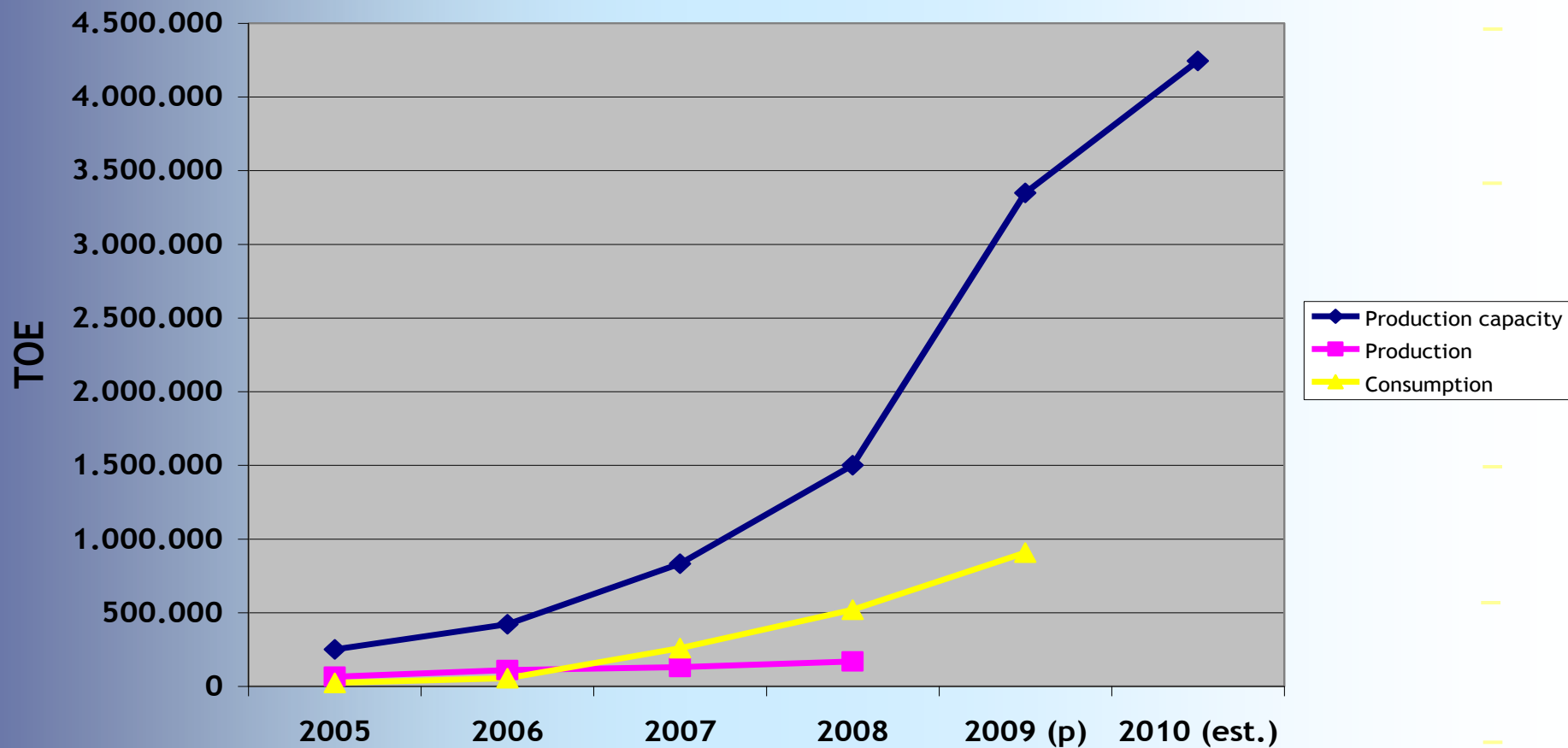
# An unbalanced situation

## Bioethanol



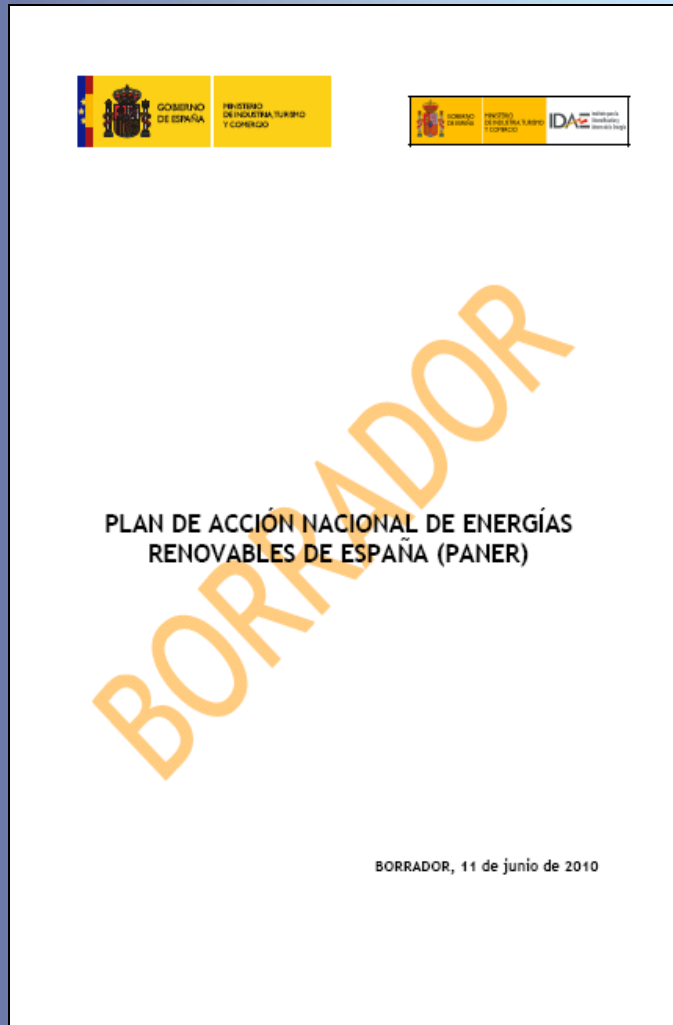


## Biodiesel





# National Renewable Energy Action Plan



- Draft version for comments since 14/June/2010
  - ✓ Available at [www.idae.es](http://www.idae.es)
- Objectives in RES-Transport for 2020:
  - ✓ 13.6%
  - ✓ 3,500 ktep of biofuels
- Strong bet on electricity for transport.



# National Renewable Energy Action Plan: Quota for RES-transport

	2005	2010	2011	2012	2013	2014	2015	2016	2017	2018	2019	2020
Fuentes Energías Renovables-Calefacción y Refrigeración (15) (%)	8,8%	11,3%	11,7%	12,0%	12,5%	13,2%	14,0%	14,9%	15,9%	17,0%	18,1%	18,9%
Fuentes Energías Renovables-Electricidad (16) (%)	18,5%	28,8%	29,8%	31,2%	31,9%	32,9%	33,8%	34,3%	35,7%	36,9%	38,2%	40,0%
Fuentes Energías Renovables-Transporte (17) (%)	0,6%	6,0%	6,1%	6,5%	6,5%	8,2%	9,3%	10,4%	11,1%	12,0%	12,7%	13,6%
Cuota global de Fuentes de												



# National Renewable Energy Action Plan: Quota for RES-transport

	2005	2010	2011	2012	2013	2014	2015	2016	2017	2018	2019	2020
C) Previsión del consumo de FER en el sector de los transportes (23)	205	1.802	1.832	1.927	1.950	2.476	2.694	3.002	3.207	3.413	3.621	3.881
H) Previsión del consumo de electricidad procedente de FER en el sector del transporte por carretera (24)	0	0	1	3	7	12	31	48	66	85	104	123
I) Previsión del consumo de biocarburantes obtenidos de desechos, residuos, materias celulósicas no alimentarias y materias lignocelulósicas en el sector de los transportes (25)	0	50	55	55	60	65	161	170	175	232	242	252
J) Previsión relativa a la contribución de las FER a los transportes para el objetivo FER-T: $(C)+(2,5-1) \times (H)+(2-1) \times (I)$	205	1.852	1.889	1.987	2.020	2.559	2.901	3.245	3.482	3.771	4.019	4.318



# Biofuels Obligation

**Law 12/2007 (02/07/2007): sets annual objectives to biofuels and other renewable fuels commercialization for the period 2008-2010**

**ORDER ITC/2877/2008 (09/10/2008) which sets a mechanism of promotion of biofuels and other renewable fuels**

**Circular 2/2009 (26/02/2009), issued by the National Energy Commission, which regulates the start-up and management of the mechanism of promotion of biofuels and other renewable fuels**

## Objective of 5,83% by 2010

### Ministerial Order:

- Obligated parties (art.3).
- Compulsory Objectives (art.4): 3,40% by 2009 and 5,83% by 2010. FLEXIBILITY.
- Certification entity (art.6): CNE.
- Conditions for certification (art. 7).
- Compensatory payments (art. 11).
- Blends (Chap. V).
- Annex with energy equivalences.



Bioethanol from straw at BCyL (Babilafuente, Salamanca)



Bioethanol from MSW at IMECAL (L'Alcudia, Valencia)

## Focus on innovation

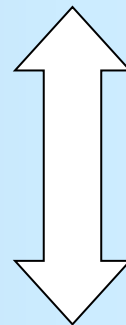
A good background

Cenit Projects

Technology platforms

PSE Projects

Set Plan



Spain is taking an active role in the process of implementation of EII:

IDAE is involved in the process. IDAE-Ciemat are dealing with EII Bioenergy.

National R+D+i Plan (2008-11)



## Challenges for the near future

- Unfair commercial practices.
- Extend the use of high blends.
  - ✓ Quality: high blend specifications.
- Legislative certainty:
  - ✓ New Directives: RED & FQD (Biofuels can help to reach the target of art. 7-a).
  - ✓ Fiscal incentive beyond 2012.
  - ✓ Implementation of use obligation and sustainability certification schemes.



### Short-term objective:

Market consolidation based on consumer confidence in quality products



# Thank you for your kind attention

*Carlos Alberto Fernández López*  
Head of Biofuels Department  
[carlosfer@idae.es](mailto:carlosfer@idae.es)

IDAE. C/ Madera, 8. Madrid 28004  
[comunicacion@idae.es](mailto:comunicacion@idae.es)