

Odyssee™ : energy efficiency indicators of reference for the European Union

The European project Odyssee provides valuable and detailed energy efficiency indicators since 16 years. It has become a database of reference to assess performance in energy efficiency for the European Union members.

This unique collection of data with such a historical background allows, for each country of the EU, to review and benchmark energy efficiency progress in every sectors and end-uses, and assess CO2 emissions abatement.

A powerful and up-to-date database

- **Data Collection:** The ODYSSEE project benefits from the combined support of the SAVE programme of the European Commission and of the 26 national Efficiency Agencies within the European network of energy efficiency agencies (« EnR »). All partners participate in the data collection process.
- **Data Mining:** all data and indicators are stored in a continuously updated database; the whole database is updated every 6 months.
- **Methodology:** A common methodology is used to produce comparative energy efficiency indicators from the database. Regular workshops are organized to compare national experiences in the field of energy efficiency policies and to harmonize the interpretations drawn from the indicators.

Value added & Usages

- Detailed energy consumption data by sector & end-use
- CO2 emissions (direct and indirect)
- Numerous indicators: energy efficiency and CO2
- Data series from 1980 to 2006
- EU 25 countries + Norway, Croatia, Romania, Bulgaria
- Data collected from national energy agencies / organizations

Database access

Product description

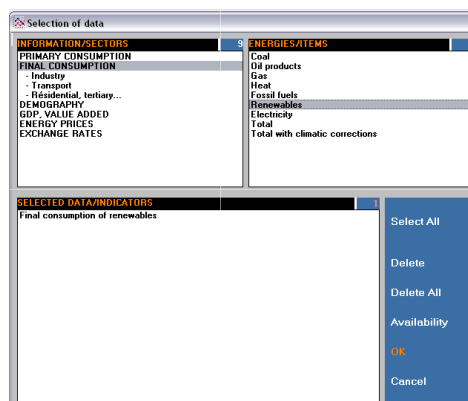
- Yearly subscription
- Online access

Assistance: during one year, we provide reactive client assistance on demand:

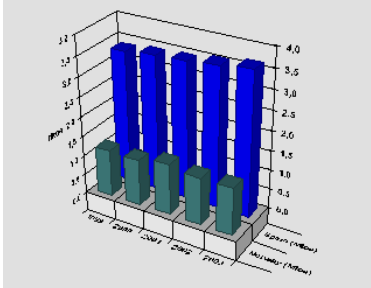
- Our data analysts support our clients in their requests.
- Our information systems specialists offer installation assistance and software training under request.

Easy Data Request and Use

NRD-Link® is a friendly and easy-to-use data retrieval software powered by Enerdata. It is designed to retrieve data simply and quickly, whether for a simple data search or for a complex query.



Final consumption of renewables



| | Unit | 2000 | 2001 | 2002 | 2003 | 2004 |
|---------|------|------|-------|------|-------|-------|
| France | Mtoe | 9.95 | 10.25 | 9.46 | 10.44 | 10.38 |
| Germany | Mtoe | 4.53 | 5.23 | 5.22 | 5.55 | 5.73 |

Requests are built according to an intuitive multiple-entry selection.

Requests results are presented in tab format and can be exploited graphically or exported to Excel. All requests can be saved.

Database Content Description

| | Energy Consumption & CO2 Emissions by Sector | Energy Efficiency Indicators | Technical & Economic Data |
|--------------------|--|--|--|
| Industry | 18 Industrial branches | <ul style="list-style-type: none"> Energy intensities and CO2 by sector and industrial branch (toe/€) | <ul style="list-style-type: none"> Value added by branch and index of production Production of steel, cement, paper, ... |
| Transport | 10 Transport modes 6 types of vehicles | <ul style="list-style-type: none"> Unit consumption and specific emissions of CO2 by modes and vehicles : l/100 km, toe/vehicle, toe/pkm, toe/tkm | <ul style="list-style-type: none"> Stock of vehicles by fuel Traffic by mode |
| Residential | 10 Household end-uses / equipment | <ul style="list-style-type: none"> Unit consumption by dwelling and equipment (toe/ dwelling, toe / equipment) Specific emissions of CO2 Energy savings CO2 indicators | <ul style="list-style-type: none"> Number of dwellings equipment ownership |
| Services | 6 Service sector branches | <ul style="list-style-type: none"> Unit consumption by dwelling and equipment (toe/ dwelling, toe/ equipment) Specific emissions of CO2 Energy savings CO2 indicators | Employment (6 branches) |

Direct and indirect emissions (emissions from electric sector included)

Project Partners

- European Commission (DG TREN/SAVE)
- EnR
- ADEME, France
- EVA, Austria
- ECONOTEC, Belgium
- DEA, Denmark
- MOTIVA, Finland
- FHG-ISI, Germany
- CRES, Greece
- SEI, Ireland
- ENEA, Italy
- ECN, The Netherlands
- IFE, Norway
- ADENE, Portugal
- IDAE, Spain
- STEM, Sweden
- ISIS, Italy
- AEAT, United Kingdom
- Energy Charter Secretariat (ECS)
- CIE, Cyprus
- CEA, Czech Republic
- TUT, Estonia
- ENCEN, Hungary
- LIDA, Latvia
- ENA, Lithuania
- MRA, Malta
- KAPE & Statistical office, Poland
- SEA & SOSR, Slovakia
- Institut Josef Stefan, Slovenia
- EEA, Bulgaria

I would like to order the Odyssee database

ORDER FORM

I order the ODYSSEE database (tick the appropriate box):

| Price List (VAT Excluded) | Public* | Private |
|---|--|---|
| Odyssee database Access: Online Update: Semestrial | <input type="checkbox"/> 900 (one user) <input type="checkbox"/> 1800 (2-5 users) | <input type="checkbox"/> 1800 (one user) <input type="checkbox"/> 3600 (2-5 users) |

Payment

- By enclosed cheque payable to ENERDATA
- By direct bank transfer (please fax me your bank details)
- On receipt of bill

*Ministry EU, SAVE Agency : -50%

Name : Surname :
 Position :
 Organization :VAT Number:.....
 Department :
 Address :
 PO BOX.....Country :
 Tel : Fax :
 E-mail :



www.odyssee-indicators.org
 email: products@enerdata.fr
 > Tel +33 (0)1 49 26 09 43
 > Fax +33 (0)1 42 60 22 62

© Copyright 2008 Enerdata. All rights reserved. © Enerdata SA. This document is only informative and does not include any guarantee from Enerdata, nor any contractual agreement. Enerdata® is a registered trademark of Enerdata.